

# SHS-H505

## USER MANUAL

Samsung  
**SMART** Doorlock

### Convenient Opening

- User friendly access with cards and password

### Graphic Interface

- Shows the operation status of the doorlock

### Double Authorization

- Requires card & password combination to open

### Double Locking

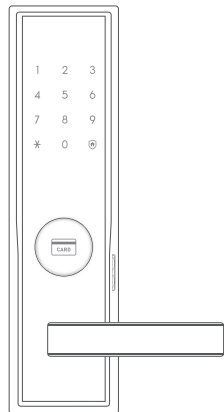
- Prevents opening from outside (Do not disturb)

### Built-in Fire Detection

- Generates alarm in case of a fire

### Security Function

- Prevents intrusion from the outside



www.sds.samsung.com

GC68-02070A ED:03

## Safety Cautions

**Warning** This section contains important information to ensure the user's safety and prevent potential damage to property. Please, read this section carefully and use the product accordingly.

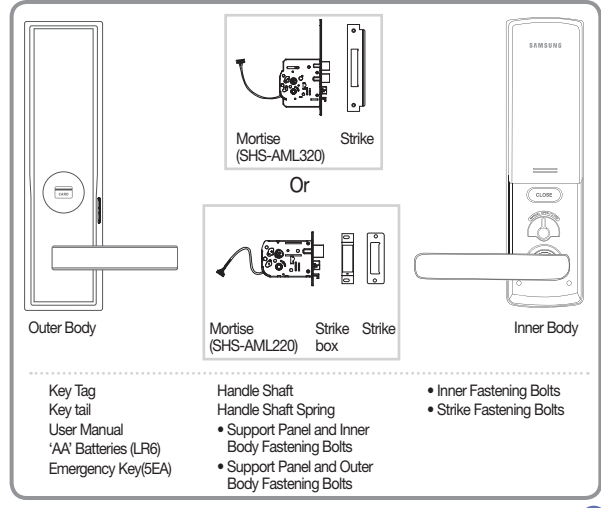
- The user shall not install or repair the product without authorization.
- Do not install the product in the place where the gap between the door and the frame is 5mm or more.
- Make sure that no unauthorized person has the access to the password.
- Do not operate the product with wet hands, and keep liquids such as water or drinks away from the product, or the product may malfunction or be damaged.
- Do not use the excessive force or sharp objects to push the lock buttons, as this can damage the product.
- Make sure that the door is completely closed when going outside. The manufacturer does not assume the responsibility for any harm caused by engagement of the lock on an improperly closed door.
- Please do not hang on the product or pull it.
- Be sure to correctly match the poles (+/-) when installing the batteries. Install the batteries with the correct poles (+/-).
- Replace all batteries immediately after they run out of power, and never mix new batteries with used ones.
- Do not use water, benzene or alcohol when cleaning the product, as these fluids can cause product malfunction.
- Replace the batteries within 1 week after the battery replacement alarm sounds.

※ In order to safely use the product, please read "Safety Precautions".

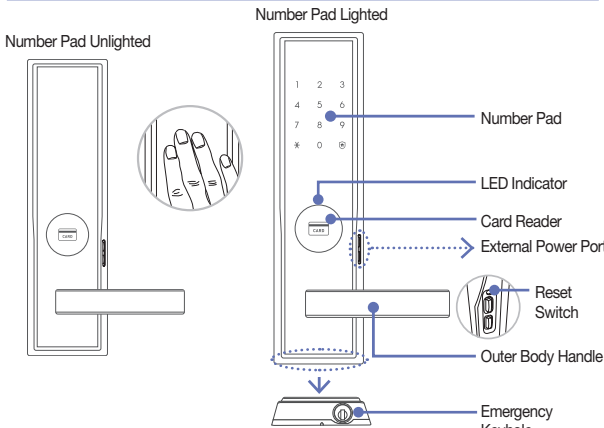
※ The features of this product and the contents of the user guide may be changed without notice for quality improvement.

## Product Components

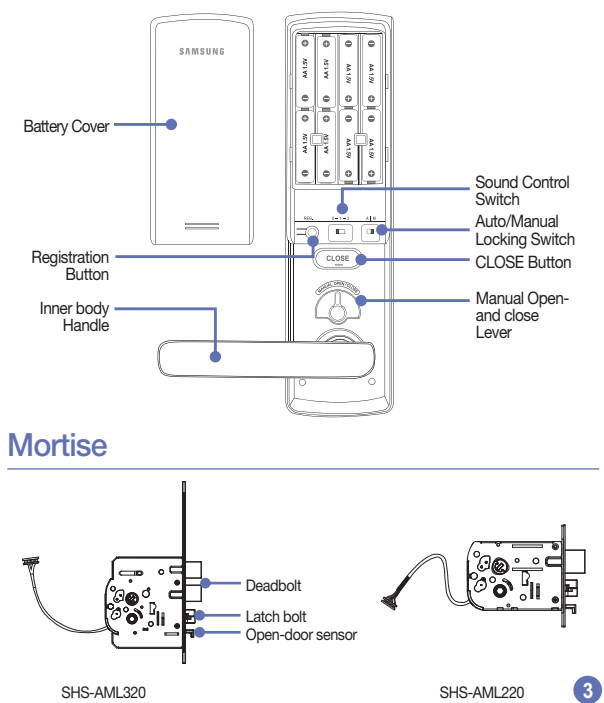
The product components used may vary depending on the installation environment.



## Outer Body Parts



## Inner Body Parts



## Password Change

The password can be 4~12 digits number. Only one password can be registered.

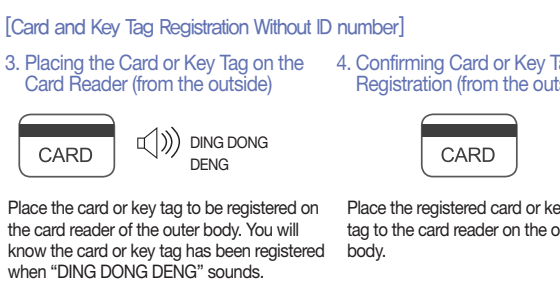
- Pressing the [Register] Button (from the inside)
- Entering the Current Password (from the outside)
- Entering a New Password (from the outside)
- Checking New Password Operation (from the outside)

**Warning** Manage your password with care so that unauthorized people will not have access to it. Regularly changing your password can reduce the risk of it being leaked.

## Card and Key Tag Registration

Up to 30 cards, including the key tag and user password, can be registered.

- Pressing the [Register] Button (from the inside)
- Entering the Current Password (from the outside)
- Placing the Card or Key Tag on the Card Reader (from the outside)
- Confirming Card or Key Tag Registration (from the outside)



**Warning** To register multiple cards or key tags, lightly place another card or key tag to the card reader within 20 seconds after registering the previous card or key tag. ID number is given automatically in order of the registration.

[Card and user password registration with ID number]

- Enter 2 digits ID number
- Enter new user password
- Placing the Card or Key Tag on the Card Reader (from the outside)
- Confirming Card or Key Tag Registration (from the outside)

Place the card or key tag to be registered on the card reader of the outer body. You will know the card or key tag has been registered when "DING DONG DENG" sounds.

**Warning** User password is only for the user, so other functions such as registering cards are not available with this password. One ID has only one password or card.

## Deleting Registered Cards

You can delete individual or all registered cards.

- Pressing the [Register] Button (from the inside)
- Entering the Current Password (from the outside)

[Deleting Cards] 3. Reading the card to be deleted



If you want to delete all cards data, press [88] + [\*] after step 2.

## Double Authorization Mode Setting

Double authorization mode requires both card and password to open the door, ensuring more security.

- Pressing the [Register] button on the inner body.
- Pressing the [\*] button after pressing the [4] or [6] button, and the authorization mode will be set.

**Note** The setup of double authorization mode only works when the door is open. When purchased, the product is not set to double authorization mode initially. To setup the double authorization mode, more than 1 card must be registered. Double authorization mode will automatically be turned off when all cards are deleted.

## Automatic/Manual Locking Setting

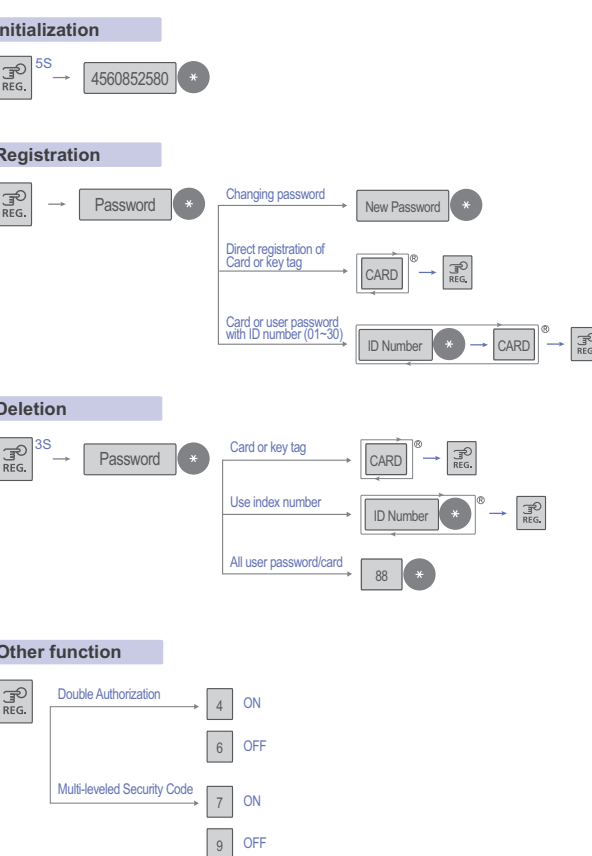
The Automatic Locking mode allows for automatic locking of the door when it is closed.

- Automatic: The door is automatically locked 2 seconds after being closed.
- Manual: The door does not lock automatically, and [CLOSE] button must be pressed from the inside, touch [Number Pad] to close the door.

## Intrusion Detection Function

This function generates the alarm sound when an attempt is made to forcefully open the door from the inside or the outside. (This is a basic function of the lock, and cannot be separately set or released.) If the door is forcefully opened while locked, the door opening sensor detects it and generates the alarm sound.

## Menu Table

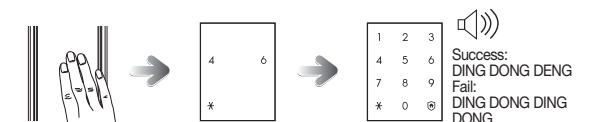


## Opening the Door from Outside with a Password

When purchased, the product is set to Multi-leveled Security Code Entry Mode initially. Please refer to "Multi-leveled Security Code Entry Mode setting" for Common Mode setting.

### ※ Silent Mode

Before entering the password, press the [\*] button and enter the password, then both the sound of the key entering and the door opening will be suspended. It is a useful function if you do not want to disturb neighbors when you go in and out at night.



Touching [Number Pad] will light up the number pad. When two arbitrary buttons are lit, press the buttons in order. When the numbers on the number pad are lit, enter the password and press the [\*] button.

- If the security mode is changed as 'common mode', second step will be skipped.

**Note** Password must be entered after the light is on, and if does not, touch [Number Pad] and re-enter. To cancel, press [0] button and re-enter. If the password is wrong 5 times, "beep" warning alarm will sound 20 times and the system will shut-down for about 3 minutes. When malfunction happens, "beep" will sound every 10 seconds, and stop mode will be turned off automatically after 3 minutes with multiple "beeps".

## Opening the Door from Outside with a Card or Key Tag

The door can be opened from outside using a card or key tag. Place the registered card or key tag on the card reader.

- Touch [Number Pad]
- Placing the Card or Key Tag on the Card Reader

Touching [Number Pad] will light up the number pad. Place the card or key tag on the card reader. The door will be opened after 1 second.

## Opening the Door from the Inside

- Pulling down the Door Lock Handle
- Rotating the Manual Open/Close Lever to the Right or Left

## Closing the Door from the Inside

- Closing the Door from the Inside
- In the Manual Locking Mode

## Initialization (Password, Card, Key Tag)

All registered data (password, card, key tag) are deleted. After initialization, the password is set to "1234", and the registered card, key tag data are erased. Please register a new password after initialization.

- Pressing the [Register] Button (from the inside)
- Entering the Numbers for Initialization (from the outside)

Press and hold the [Register] button for 5 seconds. When the number pad is lit, enter '4560852580' and then press the [\*] button.

## Sound Setting and Releasing

The sound that is generated when the number buttons are pressed, when the door is locked or when the locked door is unlocked, can be set according to the user's preference. The product is set to generate all sounds at the factory.

- Open the battery cover on the inner body.
- Put the [Sound Control] switch on one of [0], [1], or [2], and close the battery cover.

## Multi-leveled Security Code Entry Mode Setting

You can set the security mode suitable for your use when you open the door using a password.

- Pressing the [Register] button on the inner body.
- Press the [\*] button after pressing the [7] or [9] button, and the security mode will be set.

## Setting the Double Locking

The double locking function prevents opening of a locked door from outside. Setting Double Locking Releasing Double Locking

- Press the [Close] button for 2 seconds or longer from the inside while the door is locked.
- The double locking function is released when the inner body handle is rotated downward, or the manual Open/Close lever is rotated to the right or left.

### Activating Double Locking

Inside : The double locking sound is generated when the [Close] button is pressed. Outside : The double locking sound is generated, the double locking display LED is lit, and the door cannot be opened when touch [number pad], or a card is applied.

## Setting the Security Function

- Setting the Security Function
- Releasing the Security Function

## Alarm Sound (Prank Prevention Function)

This function generates an alarm sound and deactivates lock operation when it is improperly handled from the outside.

This alarm will sound if an attempt is made to open the door with an invalid card, or if a wrong password is entered five times in a row. The alarm sound is generated, and the lock is deactivated for 3 minutes. While the door is in this inactive mode, a single "DING" sound is generated every 10 seconds and seven consecutive "DINGS" will sound after 3 minutes. Following this, the lock is released from inactive mode.)

### Releasing the Alarm

- Inside Press the [Register] button.
- Outside Get a registered card authorized or enter the password and then press the [\*] button.

## Replacing the Batteries

### Battery Replacement Alarm Generation

If the melody of "Blues for Elise" sounds when opening the door with the password or a card (key tag), it is time to replace the batteries. (The low battery indicator is lit when the melody sounds.)

### Replacing the Battery

Replace all 8 batteries within a 1 week of the first alarm sound.

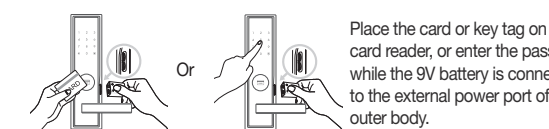
**Warning** If the poles of the batteries are not placed properly, the lock will not operate normally. Liquid leaks from batteries can damage the product. Check the batteries regularly (every 6 months). After the battery replacement alarm has sounded, password/card information cannot be registered, changed, deleted, initialized or configured until the batteries are replaced. The unit will stop operating suddenly if the batteries are not replaced.

## Using the Emergency Battery

If the batteries are not replaced after their replacement time comes, they will be completely discharged and the lock will not operate.

### Opening the Door Using an Emergency Battery

Purchase an emergency battery (9V) at the nearest store. - As the alkaline batteries offer longer life, they are recommended over the manganese batteries or rechargeable ones.



## Built-in Fire Detection Function

This function generates the alarm sound when fire is detected so that the residence can quickly respond. The built-in fire detection function is a basic function of the lock, and cannot be released by the user. Fire detection function is operational at about 75 °C ± 10 °C; this can vary depending on the installation environment.

When fire occurs, the temperature sensor detects it and flashes the [Close] button while generating the alarm sound. The door is automatically opened after the alarm sound has stopped. (The lock resumes normal operation if the inside temperature returns to a normal level.) The built-in fire detection function is activated when the temperature rises around 60°C, which may differ depending on the installation environment.

## Product Specifications

Item	Specifications	
Voltage	AA Alkaline 1.5 Batteries (LR6) 4EA or 8EA (6V)	
Emergency Power Source	9V Battery (6LF22) (Separately sold)	
Operation Method	Electronic Control Method (Password entry or card or key tag reading)	
Weight	2.6Kg (including both inner and outer bodies)	
Product Dimensions	Outer Body (including the handle)	81.9 mm(W) × 302.4 mm(H) × 66.1 mm(D)
	Inner Body (including the handle)	79.0 mm(W) × 290.0 mm(H) × 80.3 mm(D)

• The contents of this user guide are subject to change without prior notice to the user in order to enhance performance of the product.

