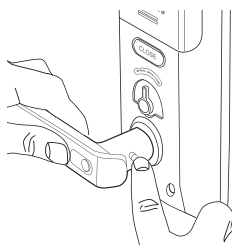


Opening the Door from Inside

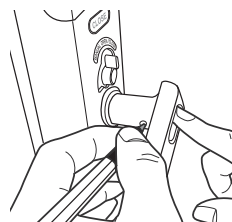
Open the locked door by using the lock handle from inside.

Fixing the safety handle button



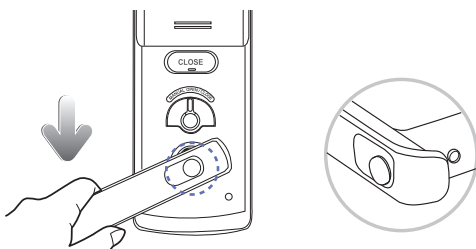
Press the fixing button while the safety handle button is pressed.

Releasing the fixing status of the safety handle button



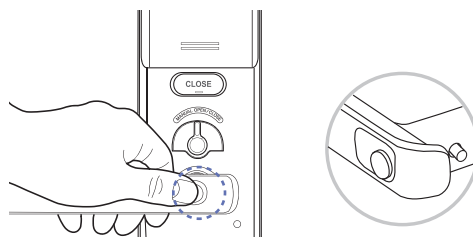
Make the fixing button be pulled out while the safety handle button is held down using a tip of a ballpoint pen, etc. In this case, the door can be opened only when the safety handle button is pressed.

Opening the door while the fixing button is pressed



Press the fixing button while the safety handle button is pressed.

Releasing the fixing status of the safety handle button



Make the fixing button pulled out while the safety handle button is held down using a tip of a ballpoint pen, etc. In this case, the door can be opened only when the safety handle button is pressed.



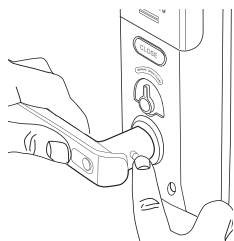
Note

- Keep the door with the fixing button not pressed to prevent burglaries.
- It is more convenient to open the door if the fixing button is pressed when lots of people come and go.

从室内开门

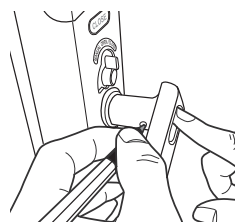
在室内使用把手即可将上锁的门打开。

锁定安全把手键



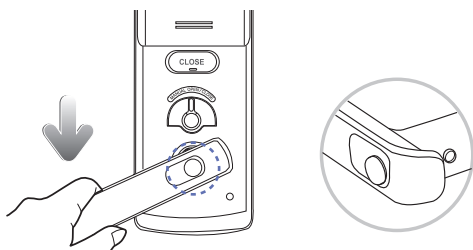
在按下安全把手键的状态下，按下锁定键即可。

解除锁定安全把手键



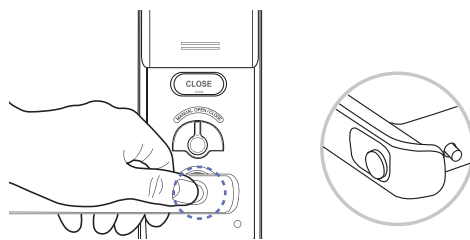
在按下安全把手键的状态下，推锁定键(圆珠笔等)使其从把手中弹出。
此时仅限在按住安全把手键的状态下可从室内开门。

在按下锁定键的状态下开门



下压门锁把手即可开门。

在未按下锁定键的状态下开门



按住安全把手键，下压门锁把手即可开门。



Note

- 为更好地防止盗窃，在未按下锁定键的状态下门会关闭。
- 经常进出时，按下锁定键可减少开门时的不便。